

Chrome Oil Tanned and Nubuck Leather

While we specialize in veg tanned leather, sometimes there are applications where chrome tanned and oiled sides are the best choice. These leathers have their advantages over veg tanned and are superior in softness, flexibility and comfort. Oil tanned leather has been very popular and is perfect for items like chaps and saddle bags to name a few. Nubuck (found on page 62) is a shoe upper type leather that offers durability and softness with an almost sueded top grain look and feel. Both come in beautiful rich colors to suit almost any project. All our chrome leathers are designed and priced well below any veg tanned leather and most other comparable chrome tans. TR selection is priced per square foot.



Made to Our Specs for the Best, Most Consistent Top Grain Leather



- Features**
- ▶ Consistent in color and grade.
 - ▶ Beautiful quality.
 - ▶ Good yield.
 - ▶ Please note that the doetan option is a softer leather.
 - ▶ May have brands.

09-1001S
Ideal for gig saddles, horse collars, headstall liners, lining harnesses, heavy work chaps, motorcycle chaps, motorcycle bags, arrow quivers, saddle bags and nail pouches.

Gauged evenly throughout



Grade	1-4 pieces	5-9 pieces	10+ pieces	Approx. Sq. Ft.
09-1001S Chrome Oil Tanned Top Grain Sides	Priced per sq. ft.			
5/6 oz. 5/64"-3/32" Medium Brown, Branded. Chocolate, Doetan, Burgundy, Black				21-25 sq. ft.



- ▶ Beautiful Quality
- ▶ Not Odd Lots
- ▶ Colors Always Match

LEATHER CONVERSION CHART	1 oz. 1/64"	2 oz. 1/32"	3 oz. 3/64"	4 oz. 1/16"	5 oz. 5/64"	6 oz. 3/32"	7 oz. 7/64"	8 oz. 1/8"
	9 oz. 9/64"	10 oz. 5/32"	11 oz. 11/64"	12 oz. 3/16"	13 oz. 13/64"	14 oz. 7/32"	15 oz. 15/64"	16 oz. 1/4"

Each weight of leather is represented in this chart by the ounces, fractional inches and an actual graphic indicating the hide thickness. The products in this catalog feature wholesale pricing. Due to market demands, leather prices are subject to change without notice.

Chrome Oil Tanned

Mix & Match

any combination of leather in any quantity to get your best quantity pricing

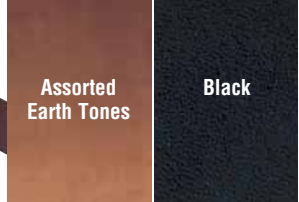
09-1002S Chrome Oil Tanned, Sides

Features

- ▶ Variety of textures and finishes.
- ▶ Most hides will have brands or small defects.
- ▶ Available in assorted earth tones that will vary from shipment to shipment and may not have the same yield as 09-1001S (on page 59). Black may also be available at times. Call for availability!

09-1002S

Ideal for gig saddles, horse collars, headstall liners, lining harnesses, heavy work chaps, motorcycle chaps, motorcycle bags, arrow quivers, saddle bags and nail pouches.



Gauged evenly throughout

Mix & Match

BEST BUY

Grade	1-4 pieces	5-9 pieces	10+ pieces	Approx. Sq. Ft.
09-1002S Chrome Oil Tanned Top Grain Sides	Priced per sq. ft.			
5/6 oz. . . . 5/64"-3/32"TR			20-23 sq. ft.

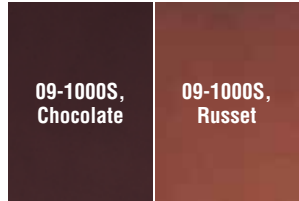
Great Value!

*Limited availability



09-1000S, Black Chrome Oil Tanned, Sides

Soft, Supple Leather



Features

- ▶ Just the right amount of oil for a soft, supple feel.
- ▶ Imported hides will have brands and small defects.
- ▶ The 09-1003S is a bit firmer than the 09-1000S.

09-1000S, 09-1003S

Ideal for gig saddles, horse collars, headstall liners, lining harnesses, heavy work chaps, motorcycle chaps, motorcycle bags, arrow quivers, saddle bags and nail pouches.



Gauged evenly throughout

Mix & Match

BEST BUY

Grade	1-4 pieces	5-9 pieces	10+ pieces	Approx. Sq. Ft.
09-1000S Chrome Oil Tanned Top Grain Sides	Priced per sq. ft.			
5/6 oz. . . . 5/64"-3/32" Black, Russet, ChocolateTR			21-25 sq. ft.
09-1003S Chrome Oil Tanned Top Grain Sides	Priced per sq. ft.			
5/6 oz. . . . 5/64"-3/32" BlackTR			21-25 sq. ft.

Leather is a Natural Product!

Leather is a natural product featuring exceptional beauty, warmth and distinct characteristics like unique shape, size, coloring, natural scars, blemishes and finishes that make each piece of leather one of a kind. These distinct characteristics are part of the leather's natural beauty and add to the personality of each product manufactured from it.

Attention!

Weaver Leather supply items are carefully selected to provide optimum quality and durability. As you are aware, however, horses are strong, powerful animals that can cause even the highest quality strap goods to break. Your common sense and commitment to equine safety are vital to the well-being of both you and your customer.